

Flat Gain, High IP3

Monolithic Amplifier

CMA-63+

50Ω 0.01 to 6 GHz

The Big Deal

- Ceramic, Hermetically Sealed, Nitrogen filled
- Low profile case, .045" high
- High Gain
- Broadband High Dynamic Range without external Matching Components



CASE STYLE: DL1721

Product Overview

CMA-63+ (RoHS compliant) is a wideband amplifier fabricated using HBT technology and offers high gain over a broad frequency range and with high IP3. In addition, the CMA-63+, has good input and output return loss over a broad frequency range without the need for external matching components and has demonstrated excellent reliability. The MMIC amplifier is bonded to a multilayer integrated LTCC substrate, and then hermetically sealed under a controlled nitrogen atmosphere with gold-plated covers and eutectic AuSn solder. These amplifiers have been tested to MIL requirements for gross leak, fine leak, thermal shock, vibration, acceleration, mechanical shock, and HTOL.

NON-CATALOG

Key Features

| Feature | Advantages |
|--|--|
| Broad Band: 0.01 to 6.0 GHz | Broadband covering primary wireless communications bands: Cellular, PCS, LTE, WiMAX, SATELLITE IF |
| Flat Gain | ±1.5 dB over 50 to 3000 MHz; eliminates need for gain flattening for most applications |
| High IP3 vs. DC power Consumption 35 dBm typical at 0.05 GHz 35 dBm typical at 0.8 GHz | The CMA-63+ matches industry leading IP3 performance relative to device size and power consumption. The combination of the design and HBT Structure provides enhanced linearity over a broad frequency range as evidence in the IP3 being typically 16 dB above the P 1dB point to 0.8 GHz. This feature makes this amplifier ideal for use in: <ul style="list-style-type: none">• Driver amplifiers for complex waveform up converter paths• Drivers in linearized transmit systems |
| No External Matching Components Required | CMA-63+ provides Input and Output Return Loss of 15 dB up to 3 GHz without the need for any external matching components |
| Ceramic Hermetic Package | Low Inductance, repeatable performance, excellent reliability. |

Notes

- A. Performance and quality attributes and conditions not expressly stated in this specification document are intended to be excluded and do not form a part of this specification document.
B. Electrical specifications and performance data contained in this specification document are based on Mini-Circuit's applicable established test performance criteria and measurement instructions.
C. The parts covered by this specification document are subject to Mini-Circuits standard limited warranty and terms and conditions (collectively, "Standard Terms"); Purchasers of this part are entitled to the rights and benefits contained therein. For a full statement of the Standard Terms and the exclusive rights and remedies thereunder, please visit Mini-Circuits' website at www.minicircuits.com/MCLStore/terms.jsp



Flat Gain, High IP3

Monolithic Amplifier

0.01-6 GHz

Product Features

- Flat Gain, ± 1.0 dB over 50-3000 MHz
- Gain, 20 dB typ. at 2 GHz
- High Pout, P1dB 18.4 dBm typ. at 2 GHz
- High IP3, 34.6 dBm typ. at 50 MHz; 32.0 dBm at 2GHz
- Excellent ESD protection, Class 1C for HBM
- Small size - 3mm x 3mm x 1.14mm
- Ceramic, hermetic, Nitrogen filled
- No external matching components required
- May be used as a replacement for SPF5043Z ^{a,b}



CASE STYLE: DL1721
PRICE: Contact Sales Dept.

CMA-63+

+RoHS Compliant

The +Suffix identifies RoHS Compliance. See our web site for RoHS Compliance methodologies and qualifications

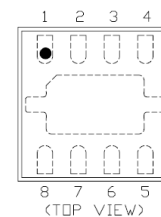
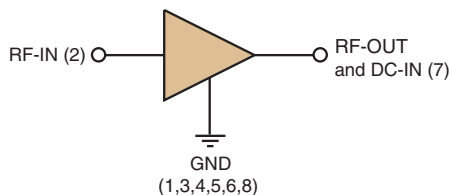
Typical Applications

- Base station infrastructure
- Portable Wireless
- CATV & DBS
- MMDS & Wireless LAN
- LTE

General Description

CMA-63+ (RoHS compliant) is an advanced wideband amplifier fabricated using HBT technology and offers ultra flat gain over a broad frequency range and with high IP3. In addition, the CMA-63+ has good input and output return loss over a broad frequency range without the need for external matching components. Terminal finish is Ni-pd-Au and it has repeatable performance from lot to lot due to fully automated, tightly controlled semiconductor and assembly processes.

simplified schematic and pin description



| Function | Pin Number | Description |
|------------------|--------------------------------------|---|
| RF IN | 2 | RF input pin. This pin requires the use of an external DC blocking capacitor chosen for the frequency of operation. |
| RF-OUT and DC-IN | 7 | RF output and bias pin. DC voltage is present on this pin; therefore a DC blocking capacitor is necessary for proper operation. An RF choke is needed to feed DC bias without loss of RF signal due to the bias connection, as shown in "Recommended Application Circuit", Fig. 2 |
| GND | 1,3,4,5,6,8, Bottom Center Paddle | Connections to ground. Use via holes as shown in "Suggested Layout for PCB Design" to reduce ground path inductance for best performance. |

Notes

- A. Performance and quality attributes and conditions not expressly stated in this specification document are intended to be excluded and do not form a part of this specification document.
 B. Electrical specifications and performance data contained in this specification document are based on Mini-Circuit's applicable established test performance criteria and measurement instructions.
 C. The parts covered by this specification document are subject to Mini-Circuits standard limited warranty and terms and conditions (collectively, "Standard Terms"); Purchasers of this part are entitled to the rights and benefits contained therein. For a full statement of the Standard Terms and the exclusive rights and remedies thereunder, please visit Mini-Circuits' website at www.minicircuits.com/MCLStore/terms.jsp

REV. C
M155058
CMA-63+
DJ/BT/CP
160222
Page 2



Electrical Specifications^{1,2} at 25°C, unless noted

| Parameter | Condition (GHz) | Min. | Typ. | Max. | Units |
|---|-----------------|------|-------|------|-------|
| Frequency Range ² | | 0.01 | | 6 | GHz |
| Gain | 0.05 | 19.0 | 21.9 | | dB |
| | 0.8 | | 21.2 | | |
| | 2.0 | | 20.3 | | |
| | 3.0 | | 19.0 | | |
| | 4.0 | | 17.5 | | |
| | 6.0 | | 14.4 | | |
| Gain Flatness | 0.05 - 3.0 | | ±1.5 | | dB |
| | 0.7 - 2.6 | | ±1.2 | | |
| Input Return Loss | 0.05 | | 16.6 | | dB |
| | 0.8 | | 20.2 | | |
| | 2.0 | | 30.0 | | |
| | 3.0 | | 16.2 | | |
| | 4.0 | | 11.5 | | |
| | 6.0 | | 8.9 | | |
| Output Return Loss | 0.05 | | 15.9 | | dB |
| | 0.8 | | 19.8 | | |
| | 2.0 | | 14.9 | | |
| | 3.0 | | 15.8 | | |
| | 4.0 | | 16.2 | | |
| | 6.0 | | 18.5 | | |
| Reverse Isolation | 2.0 | | 23.7 | | dB |
| Output Power @1 dB compression | 0.05 | | 18.7 | | dBm |
| | 0.8 | | 18.9 | | |
| | 2.0 | | 18.4 | | |
| | 3.0 | | 16.3 | | |
| | 4.0 | | 14.3 | | |
| | 6.0 | | 11.7 | | |
| Output IP3 | 0.05 | | 34.6 | | dB |
| | 1.0 | | 34.4 | | |
| | 2.0 | | 32.0 | | |
| | 3.0 | | 29.2 | | |
| | 4.0 | | 27.5 | | |
| | 6.0 | | 25.3 | | |
| Noise Figure | 0.05 | | 3.7 | | dB |
| | 1.0 | | 3.9 | | |
| | 2.0 | | 3.9 | | |
| | 3.0 | | 3.9 | | |
| | 4.0 | | 4.1 | | |
| | 6.0 | | 4.6 | | |
| Device Operating Voltage | | 4.8 | 5.0 | 5.2 | V |
| Device Operating Current | | 58 | 69 | 78 | mA |
| Device Current Variation vs. Temperature ³ | | | 62 | | µA/°C |
| Device Current Variation vs. Voltage | | | 0.035 | | mA/mV |
| Thermal Resistance, junction-to-ground lead | | | 64 | | °C/W |

NON-CATALOG

(1) Measured on Mini-Circuits Characterization test board TB-656-63+. See Characterization Test Circuit (Fig. 1)

(2) Low Frequency cut-off determined by external coupling capacitors and external bias choke.

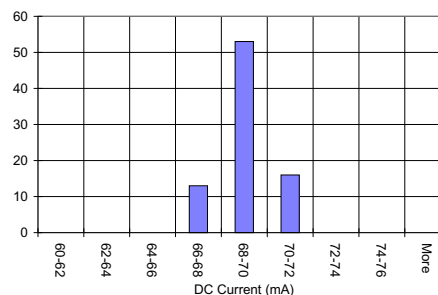
(3) (Current at 85°C — Current at -45°C)/130

Absolute Maximum Ratings

| Parameter | Ratings |
|-------------------------------------|----------------|
| Operating Temperature (ground lead) | -55°C to 105°C |
| Storage Temperature | -65°C to 125°C |
| Operating Current at 5V | 120 mA |
| Power Dissipation | 0.725 W |
| Input Power (CW) | 13 dBm |
| DC Voltage on Pin 3 | 6V |

Note:

Permanent damage may occur if any of these limits are exceeded. Electrical maximum ratings are not intended for continuous normal operation. For continuous operation, do not exceed 5.2V device voltage.



Notes

- A. Performance and quality attributes and conditions not expressly stated in this specification document are intended to be excluded and do not form a part of this specification document.
- B. Electrical specifications and performance data contained in this specification document are based on Mini-Circuit's applicable established test performance criteria and measurement instructions.
- C. The parts covered by this specification document are subject to Mini-Circuits standard limited warranty and terms and conditions (collectively, "Standard Terms"); Purchasers of this part are entitled to the rights and benefits contained therein. For a full statement of the Standard Terms and the exclusive rights and remedies thereunder, please visit Mini-Circuits' website at www.minicircuits.com/MCLStore/terms.jsp



Characterization Test Circuit

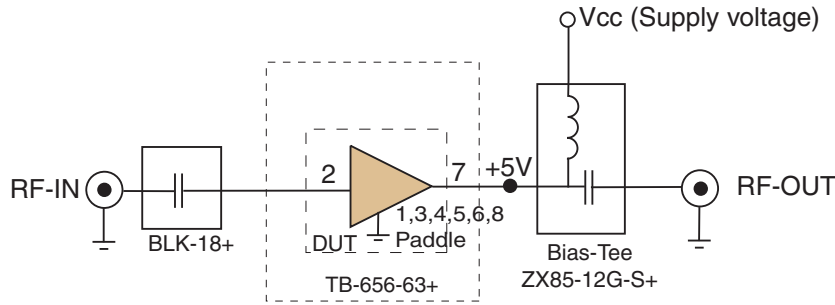


Fig 1. Block Diagram of Test Circuit used for characterization. (DUT soldered on Mini-Circuits Characterization test board TB-656-63+) Gain, Return loss, Output power at 1dB compression (P1 dB) , output IP3 (OIP3) and noise figure measured using Agilent’s N5242A PNA-X microwave network analyzer.

Conditions:

1. Gain and Return loss: Pin= -25dBm
2. Output IP3 (OIP3): Two tones, spaced 1 MHz apart, 0 dBm/tone at output.

Recommended Application Circuit

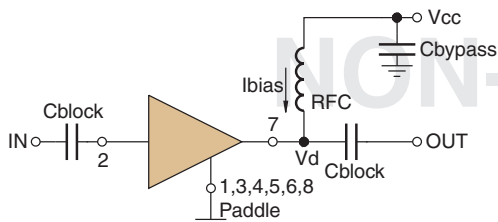
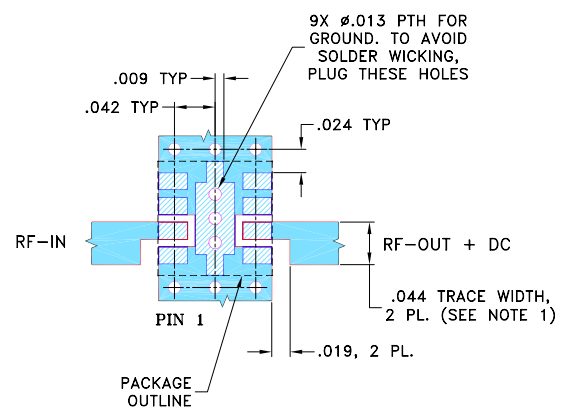


Fig 2. Test Board includes case, connectors, and components soldered to PCB for component values, please see evaluation board drawing.

Suggested PCB Layout (PL-366)

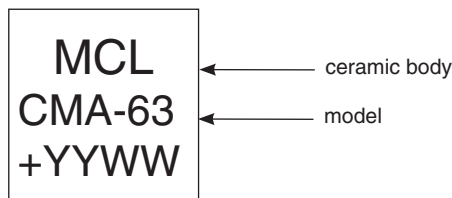


NOTES:

1. TRACE WIDTH IS SHOWN FOR ROGERS R04350B WITH DIELECTRIC THICKNESS .020" ± .0015"; COPPER: 1/2 OZ. EACH SIDE. FOR OTHER MATERIALS TRACE WIDTH AND GAP MAY NEED TO BE MODIFIED.
2. BOTTOM SIDE OF THE PCB IS CONTINUOUS GROUND PLANE.

- DENOTES PCB COPPER LAYOUT WITH SMOBC (SOLDER MASK OVER BARE COPPER)
- DENOTES COPPER LAND PATTERN FREE OF SOLDER MASK

Product Marking



Notes

- A. Performance and quality attributes and conditions not expressly stated in this specification document are intended to be excluded and do not form a part of this specification document.
- B. Electrical specifications and performance data contained in this specification document are based on Mini-Circuit's applicable established test performance criteria and measurement instructions.
- C. The parts covered by this specification document are subject to Mini-Circuits standard limited warranty and terms and conditions (collectively, "Standard Terms"); Purchasers of this part are entitled to the rights and benefits contained therein. For a full statement of the Standard Terms and the exclusive rights and remedies thereunder, please visit Mini-Circuits' website at www.minicircuits.com/MCLStore/terms.jsp

| Additional Detailed Technical Information | |
|---|--|
| <i>additional information is available on our dash board. To access this information click here</i> | |
| Performance Data | Data Table |
| | Swept Graphs |
| | S-Parameter (S2P Files) Data Set (.zip file) |
| Case Style | DL1721 <i>Ceramic package, exposed paddle, Terminal finish: Ni,Pd,Au</i> |
| Tape & Reel Standard quantities available on reel | F66-1 <i>7" reels with 20, 50, 100, 200, 500 or 1K, 2K devices.</i> |
| Suggested Layout for PCB Design | PL-366 |
| Evaluation Board | TB-656-63+ |
| Environmental Ratings | ENV-68 |

ESD Rating

Human Body Model (HBM): Class 1C (1000 to <2000V) in accordance with ANSI/ESD STM 5.1 - 2001

Machine Model (MM): Class M2 (100 to <200V) in accordance with ANSI/ESD STM5.2-1999

MSL Rating

Moisture Sensitivity: MSL1 (these parts are hermetic, air cavity and therefore, MSL ratings do not strictly apply. For handling purpose, use MSL1)

Qualification Testing

| | Test Description | Test Method/Process | Results |
|----|--|-------------------------------------|----------------|
| 1 | Hermeticity (fine and gross leak) | MIL-STD-202 Method 112, Cond. C & D | Pass |
| 2 | Acceleration, 30Kg, Y1 Direction | MIL-STD-883 Method 2001 Cond. E | Pass |
| 3 | Vibration , 10-2000Hz sine, 20g, 3 axis | MIL-STD-202 Method 204, Cond. D | Pass |
| 4 | Mechanical shock | MIL-STD-202 Method 213, Cond . A | Pass |
| 5 | PIND 20G's @ 130 Hz | MIL-STD-750 Method 2052.2 | Pass |
| 6 | Temp Cycle -55C/+125C, 1000 Cycles | MIL-STD-202 Method 107 | Pass |
| 7 | Autoclave, 121C, RH 100%, 15 Psig, 96 hrs | JESD22-A102C | Pass |
| 8 | HTOL, 1000hrs, 105C at rated Voltage condition | MIL-STD-202 Method 108, Cond . D | Pass |
| 9 | Bend Test | JESD22-B113 | Pass |
| 10 | Resistance to soldering heat, 3x reflow, 260C peak | JESD22-B102 | Pass |
| 11 | Drop Test | JESD22-B111 | Pass |
| 12 | Adhesion Strength | Push Test>10 lb | Pass |

Notes

- A. Performance and quality attributes and conditions not expressly stated in this specification document are intended to be excluded and do not form a part of this specification document.
 B. Electrical specifications and performance data contained in this specification document are based on Mini-Circuit's applicable established test performance criteria and measurement instructions.
 C. The parts covered by this specification document are subject to Mini-Circuits standard limited warranty and terms and conditions (collectively, "Standard Terms"); Purchasers of this part are entitled to the rights and benefits contained therein. For a full statement of the Standard Terms and the exclusive rights and remedies thereunder, please visit Mini-Circuits' website at www.minicircuits.com/MCLStore/terms.jsp