

Coaxial RF Transformer

FTB1-1-75

75Ω 0.5 to 500 MHz



CASE STYLE:H16

Maximum Ratings

Operating Temperature	-55°C to 100°C
Storage Temperature	-55°C to 100°C
RF Power	250mW
DC Current	30mA

Features

- wideband, 0.5 to 500 MHz
- balanced to single-ended
- balanced port: isolated Female BNC

BNC Connectors	Model	Price	Qty.
FEMALE/FEMALE	FTB1-1-75*A15	\$36.95	(1-9)
MALE/FEMALE	FTB1-1-75*C15	\$36.95	(1-9)
BRACKET (OPTION "B")		\$2.50	(1+)

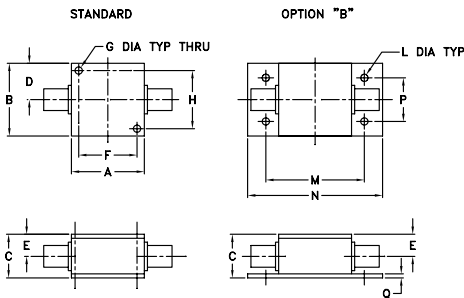
Coaxial Connections

	Marking
PRI	BAL
SEC	UNBAL

Applications

- DC Block

Outline Drawing



Transformer Electrical Specifications

MODEL NO.	Ω RATIO	FREQUENCY (MHz)	INSERTION LOSS*		
			3 dB MHz	2 dB MHz	1 dB MHz
FTB1-1-75	1	.5-500	.5-500	5-300	10-100

* Insertion Loss is referenced to mid-band loss, .6 dB typ.

Typical Performance Data

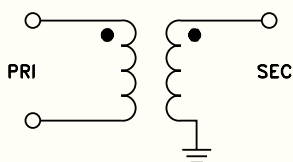
FREQUENCY (MHz)	INSERTION LOSS (dB)	INPUT R. LOSS (dB)
0.50	1.08	8.63
1.00	0.88	11.46
2.00	0.74	13.95
5.00	0.60	17.18
10.00	0.57	18.35
20.00	0.55	18.21
100.00	0.84	13.46
242.19	1.29	9.95
300.00	1.34	10.43
500.00	2.12	9.11

Outline Dimensions (inch/mm)

A	B	C	D	E	F	G	H
1.25	1.25	.75	.63	.38	1.000	.125	1.000
7.11	31.75	19.05	16.00	9.65	25.40	3.18	25.40

J	K	L	M	N	P	Q	wt
--	--	.125	1.688	2.18	.75	.07	grams
--	--	3.18	42.88	55.37	19.05	1.78	70.0

Config. E



FTB1-1-75
INSERTION LOSS

