

Surface Mount Power Splitter/Combiner

SBA-2-18+ SBA-2-18

2 Way-0° 50Ω

1600 to 2000 MHz

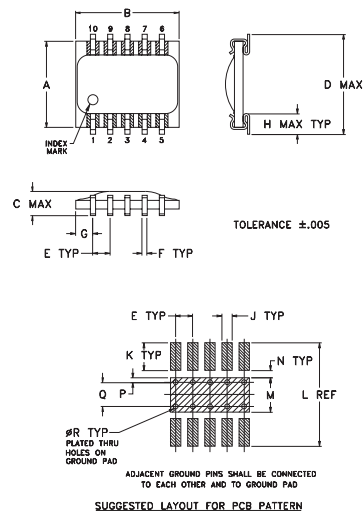
Maximum Ratings

Operating Temperature	-40°C to 85°C
Storage Temperature	-55°C to 100°C
Power Input (as a splitter)	2W max.
Internal Dissipation	0.125W max.

Pin Connections

SUM PORT	3
PORT 1	10
PORT 2	6
GROUND	1,2,4,5,7,8,9

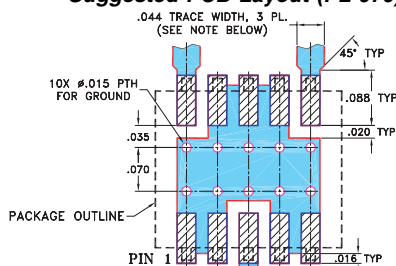
Outline Drawing



Outline Dimensions (inch)

A	B	C	D	E	F	G	H	J	K	L	M	N	P	Q	R	wt
.250	.300	.070	.290	.050	.015	.050	.060	.030	.080	.300	.100	.020	.015	.070	.014	grams
6.35	7.62	1.78	7.37	1.27	0.38	1.27	1.52	0.76	2.03	7.62	2.54	0.51	0.38	1.78	0.36	0.3

Demo Board MCL P/N: TB-95 Suggested PCB Layout (PL-070)



Features

- low insertion loss, 0.4 dB typ.
- low amplitude unbalance, 0.25 dB typ.
- leads for excellent solderability and strain relief
- protected by US Patent 5,534,830

Applications

- PCS/DCS



CASE STYLE: SM1
PRICE: \$8.95 ea. QTY (10-49)

+ RoHS compliant in accordance with EU Directive (2002/95/EC)

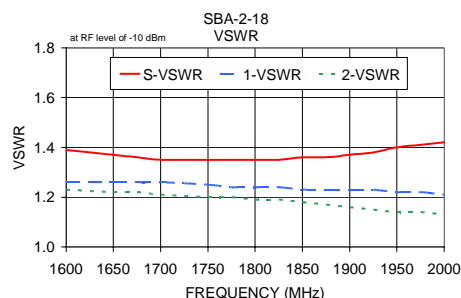
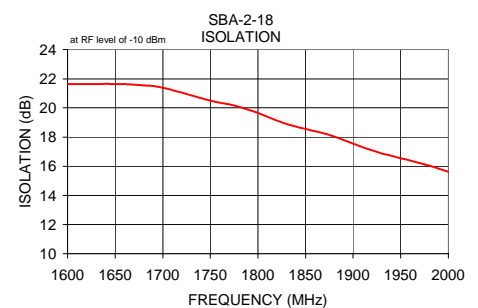
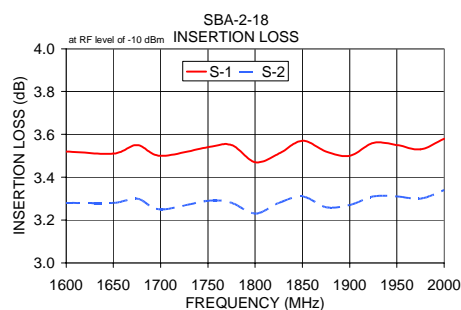
See our web site for RoHS Compliance methodologies and qualifications.

Splitter Electrical Specifications

FREQ. RANGE (MHz)	ISOLATION (dB)	INSERTION LOSS (dB) ABOVE 3.0 dB	PHASE UNBALANCE (Degrees)	AMPLITUDE UNBALANCE (dB)
f_L - f_U	Typ. Min.	Typ. Max.	Max.	Max.
1600-2000	19 13	0.4 1.0	6.0	0.6

Typical Performance Data

Frequency (MHz)	Insertion Loss (dB) S-1	Insertion Loss (dB) S-2	Amplitude Unbalance (dB)	Isolation (dB)	Phase Unbalance (deg.)	VSWR S	VSWR 1	VSWR 2
1600.00	3.52	3.28	0.25	21.63	2.95	1.39	1.26	1.23
1650.00	3.51	3.28	0.24	21.64	3.06	1.37	1.26	1.22
1675.00	3.55	3.30	0.25	21.57	3.18	1.36	1.26	1.22
1700.00	3.50	3.25	0.25	21.38	3.36	1.35	1.26	1.21
1750.00	3.54	3.29	0.25	20.50	3.30	1.35	1.25	1.20
1775.00	3.55	3.28	0.26	20.17	3.52	1.35	1.24	1.20
1800.00	3.47	3.23	0.25	19.65	3.71	1.35	1.24	1.19
1825.00	3.51	3.28	0.24	19.01	3.59	1.35	1.24	1.19
1850.00	3.57	3.31	0.27	18.55	3.77	1.36	1.23	1.18
1875.00	3.52	3.26	0.26	18.14	4.00	1.36	1.23	1.17
1900.00	3.50	3.27	0.23	17.55	3.98	1.37	1.23	1.16
1925.00	3.56	3.31	0.25	16.98	3.98	1.38	1.23	1.15
1950.00	3.55	3.31	0.26	16.55	4.19	1.40	1.22	1.14
1975.00	3.53	3.30	0.24	16.13	4.24	1.41	1.22	1.14
2000.00	3.58	3.34	0.26	15.63	4.27	1.42	1.21	1.13



electrical schematic

