

# Surface Mount RF Transformer

## TT25-1-X65+ TT25-1-X65

50Ω 0.02 to 30 MHz



CASE STYLE: X65  
PRICE: \$9.95 ea. QTY (1-9)

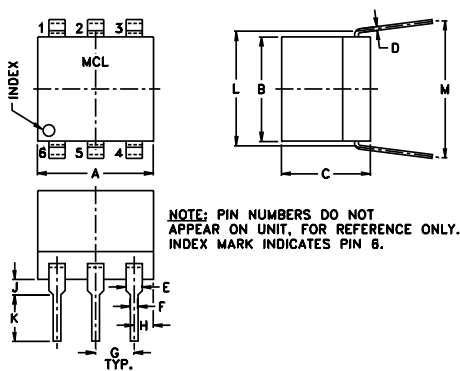
### Maximum Ratings

Operating Temperature	-20°C to 85°C
Storage Temperature	-55°C to 100°C
RF Power	250mW
DC Current	30mA

### Pin Connections

PRIMARY DOT	4
PRIMARY	6
PRIMARYCT	5
SECONDARY DOT	3
SECONDARY	1
SECONDARYCT	2

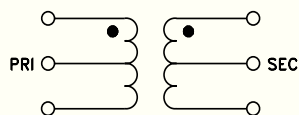
### Outline Drawing



### Outline Dimensions (inch/mm)

A	B	C	D	E	F	G
.30	.27	.23	.010	.042	.020	.100
7.62	6.86	5.84	0.25	1.07	0.51	2.54
H	J	K	L	M	wt	
.05	.04	.11	.300	.35	grams	
1.27	1.02	2.79	7.62	8.89	0.50	

### Config. B



### Features

- excellent return loss
- also available with flat-pack (W38) and surface mount gull-wing (KK81) leads

### Applications

- ham radio
- radion communication systems
- HF
- impedance matching

+ RoHS compliant in accordance with EU Directive (2002/95/EC)

See our web site for RoHS Compliance methodologies and qualifications.

### Transformer Electrical Specifications

MODEL NO.	Ω RATIO	FREQUENCY (MHz)	INSERTION LOSS*		
			3 dB MHz	2 dB MHz	1 dB MHz
TT25-1-X65(+)	25	.02-30	.02-30	.05-20	.1-10

\* Below .05 MHz, Insertion Loss is specified for room temperature and above.

### Typical Performance Data

FREQUENCY (MHz)	INSERTION LOSS (dB)	INPUT R. LOSS (dB)
0.02	2.72	6.13
0.03	1.86	7.95
0.05	1.18	10.45
0.07	0.80	13.16
0.15	0.48	19.05
0.30	0.37	25.11
1.01	0.27	28.34
4.66	0.30	12.69
20.13	1.46	2.94
30.00	2.60	2.00

TT25-1-X65  
INSERTION LOSS

