

Plug-In RFTransformer

TTMO4-1A

50Ω

0.1 to 300 MHz

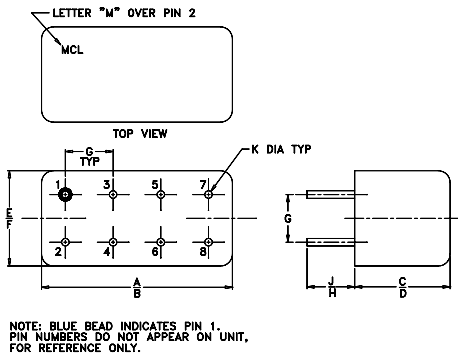
Maximum Ratings

Operating Temperature	-55°C to 100°C
Storage Temperature	-55°C to 100°C
RF Power	250mW
DC Current	30mA

Pin Connections

PRIMARY DOT	1
PRIMARY	5
SECONDARY DOT	2
SECONDARY	6
SECONDARY CT	4
CASE GROUND	7,8
PRIMARY CT	3

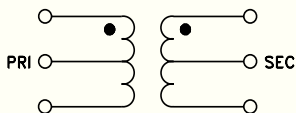
Outline Drawing



Outline Dimensions (inch/mm)

A	B	C	D	E	F
.480	.500	.390	.405	.210	.230
12.19	12.70	9.91	10.29	5.33	5.84
G	H	J	K	wt	
.100	.20	.14	.020	grams	
2.54	5.08	3.56	0.51	2.3	

Config. B



Features

- wideband, 0.1 to 300 MHz
- good return loss
- hermetic case

Applications

- military hi-rel requirements
- VHF/UHF
- receivers/transmitters



CASE STYLE: A03
PRICE: \$13.95 ea. QTY (1-9)

Transformer Electrical Specifications

MODEL NO.	Ω RATIO	FREQUENCY (MHz)	INSERTION LOSS*		
			3 dB MHz	2 dB MHz	1 dB MHz
TTMO4-1A	4	0.1-300	0.1-300	0.2-250	0.3-180

* Insertion Loss is referenced to mid-band loss, 0.3 dB typ.

Typical Performance Data

FREQUENCY (MHz)	INSERTION LOSS (dB)	INPUT R. LOSS (dB)
0.10	1.00	10.00
0.85	0.41	24.31
4.00	0.28	32.42
18.93	0.31	32.56
53.35	0.37	22.30
99.34	0.47	14.66
175.64	0.56	6.89
223.68	0.73	4.12
261.29	1.00	2.74
300.00	1.56	1.90

TTMO4-1A
INSERTION LOSS

