

Plug-In

Frequency Mixer

Level 7 (LO Power + 7 dBm) 20 to 1500 MHz

TUF-5+



CASE STYLE: B02
PRICE: \$12.70 ea. QTY (1-9)

+ RoHS compliant in accordance with EU Directive (2002/95/EC)

The +Suffix has been added in order to identify RoHS Compliance. See our web site for RoHS Compliance methodologies and qualifications.

Maximum Ratings

Operating Temperature	-55°C to 100°C
Storage Temperature	-55°C to 100°C
RF Power	50mW
IF Current	40mA

Permanent damage may occur if any of these limits are exceeded.

Pin Connections

LO	4
RF	1
IF	2
GROUND	3
CASE GROUND	3

Features

- low conversion loss, 5.7 dB typ.
- high L-R isolation, 42 dB typ.
- wideband, 20 to 1500 MHz
- rugged welded construction

Applications

- cellular
- satellite & distribution
- GSM/ISM

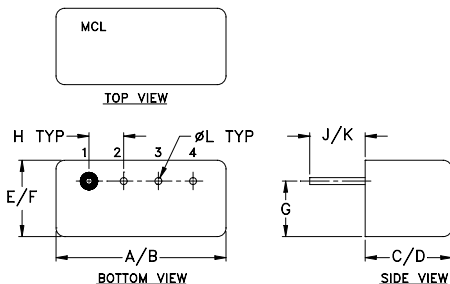
Electrical Specifications

FREQUENCY (MHz)	CONVERSION LOSS (dB)	LO-RF ISOLATION (dB)			LO-IF ISOLATION (dB)			IP3 @ CENTER BAND (dBm)										
		L	M	U	L	M	U											
20-1500	DC-1000	5.7	0.04	9.0	9.0	54	40	42	30	39	25	40	25	32	18	23	8	12

1 dB COMP.: +1 dBm typ.

L = low range [f_L to $10 f_L$] M = mid range [$10 f_L$ to $f_U/2$] U = upper range [$f_U/2$ to f_U]
m = mid band [$2f_L$ to $f_U/2$]

Outline Drawing



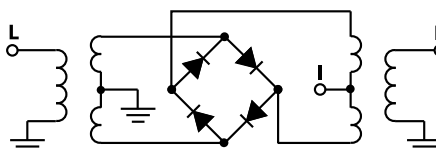
Outline Dimensions (inch/mm)

A	B	C	D	E	F
.480	.500	.240	.255	.210	.230
12.19	12.70	6.10	6.48	5.33	5.84
G	H	J	K	L	wt
.16	.100	.14	.20	.020	grams
4.06	2.54	3.56	5.08	0.51	1.9

Typical Performance Data

Frequency (MHz)		Conversion Loss (dB)	Isolation L-R (dB)	Isolation L-I (dB)	VSWR RF Port (:1)	VSWR LO Port (:1)
RF	LO	LO +7dBm	LO +7dBm	LO +7dBm	LO +7dBm	LO +7dBm
20.00	50.00	5.76	69.06	50.01	1.56	2.37
40.00	70.00	5.54	63.75	45.70	1.44	2.31
50.00	80.00	5.44	61.73	43.88	1.56	2.17
100.00	70.00	5.38	56.05	38.99	1.62	2.16
158.75	128.75	5.40	52.30	36.23	1.89	2.18
200.00	170.00	5.41	49.90	34.38	2.12	2.20
297.50	267.50	5.58	46.54	31.36	2.25	2.23
436.25	406.25	5.81	46.39	28.70	2.65	2.27
500.00	470.00	5.94	46.35	27.70	3.02	2.33
575.00	545.00	6.28	45.43	26.65	3.26	2.35
713.75	683.75	6.65	43.76	25.47	3.36	2.38
750.00	720.00	6.73	43.43	25.18	3.43	2.42
852.50	822.50	6.83	42.21	24.77	3.60	2.54
991.25	961.25	7.20	40.31	22.85	3.65	2.71
1000.00	970.00	7.15	40.23	22.65	3.65	2.84
1130.00	1100.00	7.28	38.87	19.85	3.62	2.90
1268.75	1238.00	7.27	38.46	17.22	3.58	3.10
1407.50	1377.50	7.29	37.61	14.48	3.50	3.39
1453.75	1423.75	7.22	37.14	13.58	3.42	3.62
1500.00	1470.00	7.38	36.87	12.98	3.39	3.76

Electrical Schematic



Mini-Circuits®
ISO 9001 ISO 14001 AS 9100 CERTIFIED

minicircuits.com

P.O. Box 350166, Brooklyn, New York 11235-0003 (718) 934-4500 Fax (718) 332-4661 For detailed performance specs & shopping online see Mini-Circuits web site



The Design Engineers Search Engine Provides ACTUAL Data Instantly From MINI-CIRCUITS At: www.minicircuits.com

IF/RF MICROWAVE COMPONENTS

REV. A
M98898
TUF-5+
DJ/TD/CP
061211
Page 1 of 2

