

Plug-In Frequency Mixer

TUF-5MH+

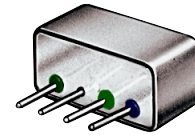
Level 13 (LO Power +13dBm) 20 to 1500 MHz

Features

- low conversion loss, 7.0 dB typ.
- wideband, 20 to 1500 MHz
- good L-R isolation, 41 dB typ.
- rugged welded construction, non-hermetic

Applications

- VHF/UHF
- satellite distribution
- cellular
- GPS



CASE STYLE: B02
PRICE: \$13.45 ea. QTY (1-9)

+ RoHS compliant in accordance with EU Directive (2002/95/EC)

The +suffix has been added in order to identify RoHS Compliance. There has been no change to the model's material, form, fit, or function. See our web site for RoHS Compliance methodologies and qualifications.

Mixer Electrical Specifications

MODEL NO.	FREQUENCY (MHz)		CONVERSION LOSS (dB)				LO-RF ISOLATION (dB)			LO-IF ISOLATION (dB)								
	LO/RF $f_L - f_U$	IF	Mid-Band m		Total Range Max.	L Typ. Min.	M Typ. Min.	U Typ. Min.	L Typ. Min.	M Typ. Min.	U Typ. Min.							
			x	σ								Max.	Max.					
TUF-5MH+	20-1500	DC-1000	7.0	.25	8.5	9.0	50	40	41	30	35	25	38	25	28	18	20	8

1 dB COMP.: +9 dBm typ.
L = low range [f_L to $10 f_L$] M = mid range [$10 f_L$ to $f_U/2$] U = upper range [$f_U/2$ to f_U]
m = mid band [$2f_L$ to $f_U/2$]

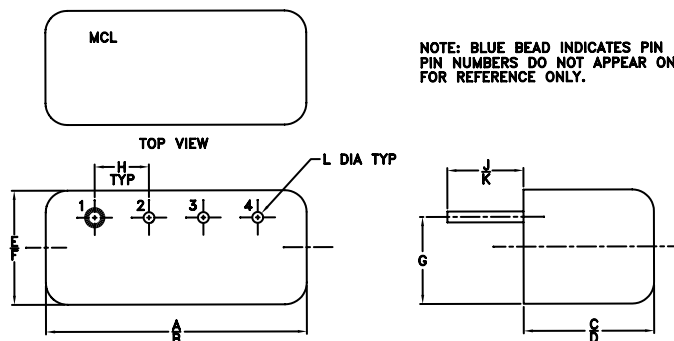
Pin Connections

LO	4
RF	1
IF	2
GROUND	3
CASE GROUND	3

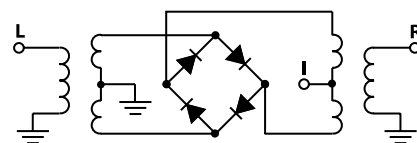
Maximum Ratings

Operating Temperature	-55°C to 100°C
Storage Temperature	-55°C to 100°C
RF Power	200mW
IF Current	40mA

Outline Drawing



electrical schematic



Outline Dimensions (inch)

A	B	C	D	E	F	G	H	J	K	L	wt.
.480	.500	.240	.255	.210	.230	.16	.100	.14	.20	.020	grams
12.19	12.70	6.10	6.48	5.33	5.84	4.06	2.54	3.56	5.08	.51	1.9



Distribution Centers NORTH AMERICA 800-654-7949 • 417-335-5935 • Fax 417-335-5945 • EUROPE 44-1252-832600 • Fax 44-1252-837010

Mini-Circuits ISO 9001 & ISO 14001 Certified

INTERNET <http://www.minicircuits.com>

P.O. Box 350166, Brooklyn, New York 11235-0003 (718) 934-4500 Fax (718) 332-4661

REV. A
M98988
TUF-5MH+
DJ/TD/CP
050916
Page 1 of 2

Typical Performance Data

Frequency		Conversion Loss (dB)	Isolation L-R (dB)	Isolation L-I (dB)	VSWR RF port (:1)	VSWR LO port (:1)
RF MHz	LO MHz	LO +13dBm	LO +13dBm	LO +13Bm	+13dBm	LO +13dBm
20.00	50.00	5.87	65.81	50.21	1.57	2.60
50.00	80.00	5.57	58.31	42.94	1.38	2.52
100.00	70.00	5.41	52.44	37.15	1.37	2.40
158.75	128.75	5.37	48.96	34.29	1.48	2.28
200.00	170.00	5.43	47.29	32.96	1.56	2.37
297.50	267.50	5.51	45.30	30.09	1.77	2.30
436.25	406.25	5.79	45.57	27.35	2.15	2.34
500.00	470.00	5.90	45.56	26.32	2.23	2.33
575.00	545.00	6.21	44.68	25.44	2.70	2.39
713.75	683.75	6.95	43.61	24.34	3.13	2.40
750.00	720.00	7.16	43.15	24.17	3.17	2.43
760.00	730.00	7.15	43.01	24.16	3.31	2.44
852.50	822.50	7.16	41.36	23.95	3.52	2.50
991.25	961.25	7.16	39.32	22.75	3.65	2.58
1000.00	970.00	7.32	39.30	22.64	3.71	2.59
1130.00	1100.00	7.38	36.80	20.71	3.70	2.62
1222.50	1192.50	7.32	38.30	18.60	3.63	2.70
1361.25	1331.25	7.13	37.67	15.58	3.42	2.64
1453.75	1423.75	7.10	37.62	13.78	3.33	2.62
1500.00	1470.00	7.00	37.26	12.95	3.23	2.57

Performance Charts

