

Coaxial

Power Splitter/Combiner

ZB4PD-4

4 Way-0° 50Ω 3700 to 4200 MHz

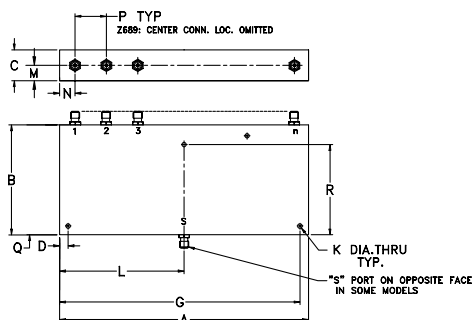
Maximum Ratings

Operating Temperature	-55°C to 100°C
Storage Temperature	-55°C to 100°C
Power Input (as a splitter)	10W max.
Internal Dissipation	0.375W max.

Coaxial Connections

SUM PORT	S
PORT 1	1
PORT 2	2
PORT 3	3
PORT 4	4

Outline Drawing



Outline Dimensions (inch/mm)

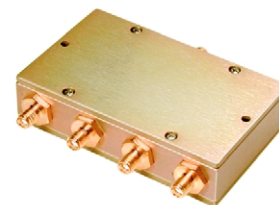
A	B	C	D	G	K	
3.50	2.13	.88	.250	3.250	.125	
7.11	54.10	22.35	6.35	82.55	3.18	
L	M	N	P	Q	R	wt
1.750	.44	.415	.89	.250	1.813	grams
44.45	11.18	10.54	22.61	6.35	46.05	250

Features

- wideband, 3750 to 4200 MHz
- up to 10W power input as splitters
- rugged, shielded case

Applications

- wireless
- communication systems
- satellite communications



SMA version shown

CASE STYLE: Z54

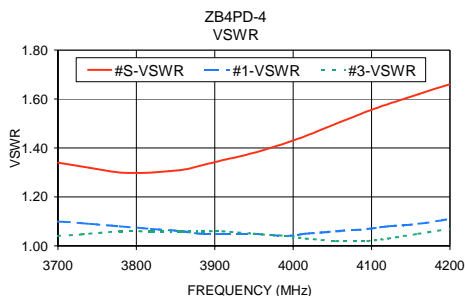
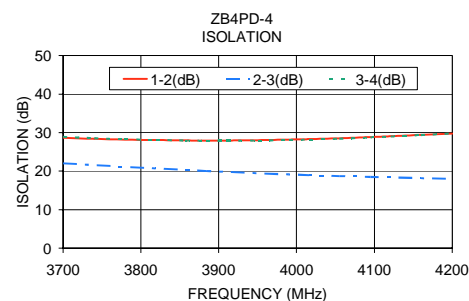
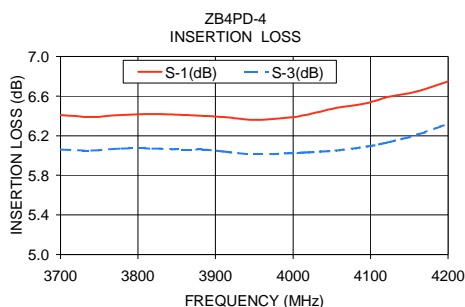
Connectors	Model	Price	Qty.
SMA	ZB4PD-4-S	\$94.95	(1-9)
N-TYPE	ZB4PD-4-N	\$94.95	(1-9)

Splitter Electrical Specifications

FREQ. RANGE (MHz)	ISOLATION (dB)	INSERTION LOSS (dB) ABOVE 6 dB	PHASE UNBALANCE (Degrees)	AMPLITUDE UNBALANCE (dB)
f_L - f_U	Typ. Min.	Typ. Max.	Max.	Max.
3700-4200	24 15	0.6 1.1	8	0.8

Typical Performance Data

Freq. (MHz)	Insertion Loss (dB)				Amp. Unbal. (dB)	Isolation (dB)			VSWR				
	S-1	S-2	S-3	S-4		1-2	2-3	3-4	S	1	2	3	4
3700.00	6.41	6.16	6.06	6.43	0.37	28.68	22.06	28.90	1.34	1.10	1.07	1.04	1.11
3740.00	6.39	6.16	6.05	6.42	0.37	28.40	21.57	28.54	1.32	1.09	1.07	1.05	1.11
3778.80	6.41	6.17	6.07	6.45	0.38	28.18	21.13	28.28	1.30	1.08	1.07	1.06	1.10
3818.80	6.42	6.17	6.07	6.47	0.40	28.07	20.72	28.12	1.30	1.07	1.07	1.06	1.09
3857.50	6.41	6.17	6.06	6.47	0.41	27.97	20.30	27.95	1.31	1.06	1.07	1.06	1.09
3883.80	6.40	6.17	6.06	6.46	0.40	27.95	20.05	27.90	1.33	1.05	1.06	1.06	1.08
3910.00	6.39	6.16	6.04	6.44	0.40	27.95	19.80	27.88	1.35	1.05	1.06	1.06	1.08
3950.00	6.36	6.13	6.01	6.41	0.40	28.02	19.44	27.93	1.38	1.05	1.06	1.05	1.09
3990.00	6.38	6.13	6.02	6.43	0.41	28.19	19.16	23.05	1.42	1.04	1.05	1.04	1.09
4016.30	6.41	6.15	6.03	6.45	0.42	28.31	18.96	28.18	1.45	1.05	1.06	1.03	1.10
4055.00	6.48	6.17	6.05	6.51	0.46	28.55	18.72	28.42	1.50	1.06	1.07	1.02	1.11
4095.00	6.53	6.22	6.09	6.54	0.45	28.85	18.49	28.74	1.55	1.07	1.09	1.02	1.12
4121.30	6.59	6.27	6.13	6.58	0.46	29.08	18.36	28.97	1.58	1.08	1.10	1.03	1.13
4160.00	6.65	6.35	6.21	6.64	0.44	29.42	18.17	29.37	1.62	1.09	1.12	1.05	1.14
4200.00	6.75	6.46	6.32	6.71	0.43	29.76	18.00	29.70	1.66	1.11	1.14	1.07	1.15



electrical schematic

