

Coaxial

Power Splitter/Combiner

ZFSC-16-1-75

16 Way-0° 75Ω

1 to 150 MHz

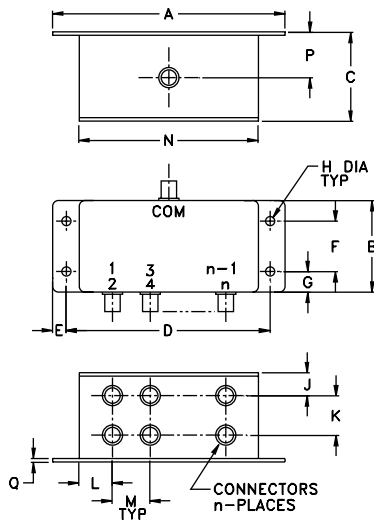
Maximum Ratings

Operating Temperature	-55°C to 100°C
Storage Temperature	-55°C to 100°C
Power Input (as a splitter)	1W max.
Internal Dissipation	0.87W max.

Coaxial Connections

SUMPORT	S(COM)
PORT 1,2,3.....,16	1,2,3.....,16

Outline Drawing



Outline Dimensions (inch/mm)

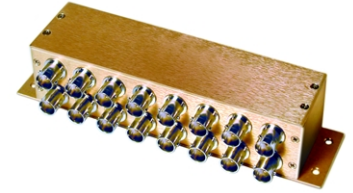
A	B	C	D	E	F	G	H
6.69	1.60	1.50	6.22	.24	.88	.36	.160
7.11	40.64	38.10	157.99	6.10	22.35	9.14	4.06
J	K	L	M	N	P	Q	wt.
.40	.69	.55	.66	5.72	.81	.06	grams
10.16	17.53	13.97	16.76	145.29	20.57	1.52	500

Features

- low insertion loss, 0.7 dB typ.
- high isolation, 30dB typ.
- excellent amplitude unbalance, 0.2 dB typ.
- rugged, shielded case

Applications

- HF/VHF
- communication systems
- instrumentation



CASE STYLE: R30

Connectors	Model	Price	Qty.
BNC	ZFSC-16-1-75	\$182.95	(1-9)

Splitter Electrical Specifications

FREQ. RANGE (MHz)	ISOLATION (dB)			INSERTION LOSS (dB) ABOVE 12 dB			PHASE UNBALANCE (Degrees)			AMPLITUDE UNBALANCE (dB)		
	L	M	U	L	M	U	L	M	U	L	M	U
f_L - f_U	Typ. Min.	Typ. Min.	Typ. Min.	Typ. Max.	Typ. Max.	Typ. Max.	Max.	Max.	Max.	Max.	Max.	Max.
1-150	30	25	25	0.8	1.1	1.0	3	6	10	0.4	0.2	0.4

L = low range [f_L to $10 f_L$] M = mid range [$10 f_L$ to $f_U/2$] U = upper range [$f_U/2$ to f_U]

Typical Performance Data

Frequency (MHz)	Insertion Loss (dB) S-1	Amplitude Unbalance (dB)	Isolation (dB)		Phase Unbalance (deg.)	VSWR S	VSWR 1
			Adjacent	Opposite			
1.00	12.48	0.26	39.02	35.90	1.42	1.31	1.22
3.00	12.40	0.18	42.46	39.97	0.90	1.28	1.14
5.00	12.37	0.15	44.14	41.72	0.75	1.29	1.10
8.00	12.36	0.14	45.18	43.00	0.65	1.30	1.08
13.00	12.36	0.13	45.36	43.42	0.66	1.30	1.07
22.00	12.41	0.11	45.22	42.83	0.75	1.29	1.06
31.00	12.45	0.07	44.91	41.43	0.84	1.29	1.07
40.00	12.49	0.07	45.16	40.14	0.85	1.28	1.08
61.00	12.56	0.08	46.17	37.07	0.95	1.25	1.11
78.00	12.62	0.07	47.21	35.06	0.98	1.22	1.13
87.00	12.63	0.10	48.26	34.15	0.94	1.20	1.14
105.00	12.69	0.10	50.55	32.42	0.99	1.17	1.15
120.00	12.73	0.11	51.55	31.15	0.96	1.15	1.17
135.00	12.76	0.13	52.04	30.00	1.07	1.13	1.19
150.00	12.80	0.14	50.80	28.97	1.18	1.13	1.21

